

Welcome, parsons

[Archive](#)[Archive](#)

CHELSEA COLLEGE TEXTILE COLOUR PROJECT: FROM A TO B & BACK AGAIN

By Ruth Greany, WGSN, 02 December 2011

Inspired by the philosophy of psychogeography, second-year textile students at the Chelsea College of Art and Design recently showcased a body of work that explores the importance of colour within design.



Chelsea College of Art and Design

By studying natural or urban landscapes through layers of history and time, the students were encouraged to develop a unique colour palette to capture the spirit of their research.

Selecting the most inspiring developments from the exhibition, WGSN has divided the final outcomes into four main colour directions: bold, crafted, urban and organic colour.

BOLD COLOUR

Merge/melt/fuse/pour



Source: WGSN. Designer: Daniela Rosenthal. College: Chelsea College of Art and Design
d.rosenthal2@arts.ac.uk



Source: WGSN. Designer: Daniela Rosenthal. College: Chelsea College of Art and Design
d.rosenthal2@arts.ac.uk



Source: WGSN. Designer: Matthew Jacques. College: Chelsea College of Art and Design
m.jacques1@chelsea.arts.ac.uk

ANALYSIS

- Bold colour**

Fluorescent and primary colours framed against dark navy and black

- Crafted colour**

Mélange autumnal palette blending tones of maple, berry and moss

- Urban colour**

Industrial shades of grey with salmon, canary and teal highlights

- Organic colour**

Woodland shades lichen including mustard, ginger and orchid

PSYCHOGEOGRAPHY INCLUDES JUST ABOUT ANYTHING THAT TAKES PEDESTRIANS OFF THEIR PREDICTABLE PATHS AND JOLTS THEM INTO A NEW AWARENESS OF THE URBAN LANDSCAPE.

Joseph Hart, 2004

CONTACTS

Specialism: knit

Lauren Maun
l.maun1@arts.ac.uk

Rachel Lentin
r.lentin1@chelsea.arts.ac.uk

Vita Ivicic
v.ivicic2@arts.ac.uk

Specialism: print/cad



Source: WGSN. Designer: Kate Martin. College: Chelsea College of Art and Design k.martin12@arts.ac.uk



Source: WGSN. Designer: Hannah Brooks. College: Chelsea College of Art and Design h.brooks1@chelsea.arts.ac.uk

Anna Artemova
a.artemova1@arts.ac.uk

Hannah Brooks
h.brooks1@chelsea.arts.ac.uk

Kate Martin
k.martin12@arts.ac.uk

Matthew Jacques
m.jacques1@chelsea.arts.ac.uk

Specialism: print/plus

Harrison Butterworth
h.butterworth1@chelsea.arts.ac.uk

Specialism: stitch

Alexandra Easten Brinck
a.brincki@chelsea.arts.ac.uk

Daniela Rosenthal
d.rosenthal2@arts.ac.uk

Jing Xue
j.xue3@chelsea.arts.ac.uk

Poppy-Rae Beckwith
p.beckwith1@arts.ac.uk

Valentine Rosi
v.rosi1@arts.ac.uk

Yue Wei
y.wei5@arts.ac.uk

Specialism: weave

Egle Jauncemaite
e.jauncemaite1@chelsea.arts.ac.uk

Mariana Giraldo
m.giraldovelez1@arts.ac.uk

Raisa Kabir
r.kabir2@chelsea.arts.ac.uk

CRAFTED COLOUR

Twist/fold/bind/pleat



Source: WGSN. Designer: Poppy-Rae Beckwith. College: Chelsea College of Art and Design p.beckwith1@arts.ac.uk



Source: WGSN. Designer: Jing Xue. College: Chelsea College of Art and Design j.xue3@chelsea.arts.ac.uk



Source: WGSN. Designer: Jing Xue. College: Chelsea College of Art and Design j.xue3@chelsea.arts.ac.uk



Source: WGSN. Designer: Vita Ivicic. College: Chelsea College of Art and Design v.ivicic2@arts.ac.uk



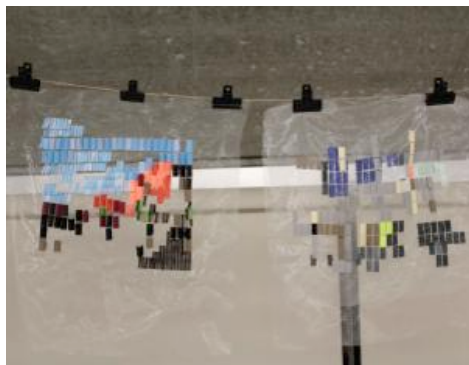
Source: WGSN. Designer: Egle Jauncemaite. College: Chelsea College of Art and Design e.jauncemaite1@chelsea.arts.ac.uk



Source: WGSN. Designer: Egle Jauncemaite. College: Chelsea College of Art and Design e.jauncemaite1@chelsea.arts.ac.uk

URBAN COLOUR

Construct/extract/assemble/score



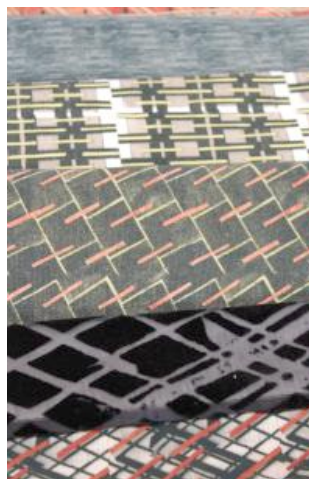
Source: WGSN. Designer: Valentine Rosi. College: Chelsea College of Art and Design v.rosi@arts.ac.uk



Source: WGSN. Designer: Harrison Butterworth. College: Chelsea College of Art and Design h.butterworth1@chelsea.arts.ac.uk



Source: WGSN. Designer: Mariana Giraldo. College: Chelsea College of Art and Design m.giraldovelezi@arts.ac.uk



Source: WGSN. Designer: Anna Artemova. College: Chelsea College of Art and Design a.artemova1@arts.ac.uk



Source: WGSN. Designer: Anna Artemova. College: Chelsea College of Art and Design a.artemova1@arts.ac.uk

ORGANIC COLOUR

Erode/fray/layer/stack



Source: WGSN. Designer: Alexandra Easten Brinck. College: Chelsea College of Art and Design a.brinck1@chelsea.arts.ac.uk



Source: WGSN. Designer: Raisa Kabir. College: Chelsea College of Art and Design r.kabir2@chelsea.arts.ac.uk



Source: WGSN. Designer: Yue Wei.
College: Chelsea College of Art and
Design y.wei5@arts.ac.uk



Source: WGSN. Designer: Yue Wei.
College: Chelsea College of Art and
Design y.wei5@arts.ac.uk



Source: WGSN. Designer: Lauren
Maun. College: Chelsea College of Art
and Design l.mauni@arts.ac.uk